



15 Bronte Court, Bellamy Farm Road, Shirley B90 3DP £140,000

www.simonburthomes.co.uk

Key Features

Communal Entrance Hall
 Reception Hall
 Living Room with Balcony
 Re-Fitted Kitchen
 Inner Hallway
 Two Bedrooms
 Bathroom
 Gas Central Heating
 Double Glazing
 Garage En-Bloc
 Communal Gardens
 No Chain

15 Bronte Court is a well proportioned, tastefully presented, two bedroomed, first floor apartment, conveniently situated in this popular residential.

Tenure

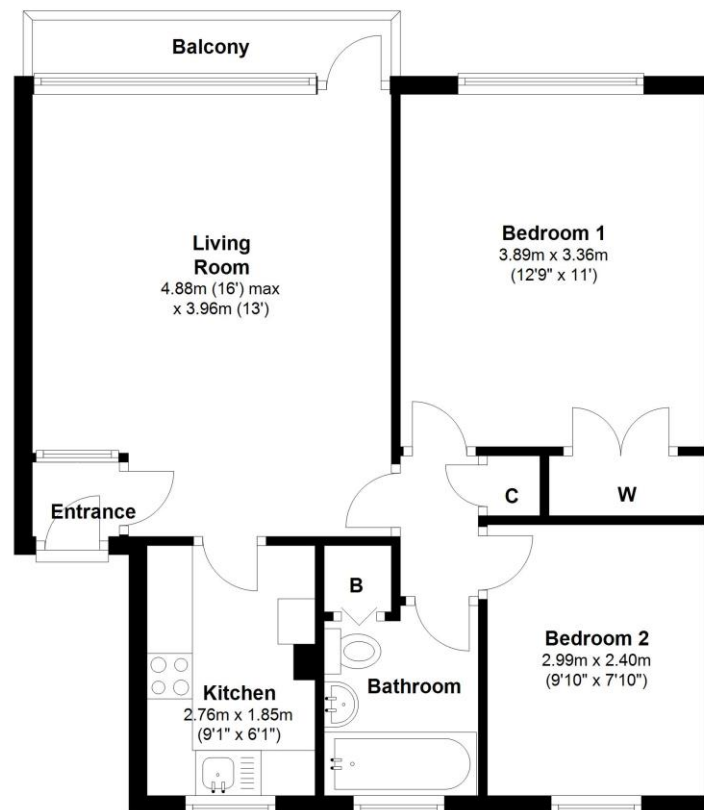
We have been advised that the property is LEASEHOLD having 140 years unexpired. The Service Charge is £1,000 per annum which includes the Ground Rent. However, you should check this with your legal advisor before exchanging contracts.

Local Authority

Solihull Metropolitan Borough Council

First Floor

Approx. 53.8 sq. metres (579.4 sq. feet)



Viewing Arrangements

Telephone: 0121 705 4040 Email: sales@simonburthomes.co.uk Visit: www.simonburthomes.co.uk

Total area: approx. 53.8 sq. metres (579.4 sq. feet)

These particulars do not constitute part or all of an offer or contract. The measurements indicated are supplied for guidance only and as such must be considered incorrect. Potential buyers are advised to recheck the measurements before committing to any expense. Simon Burt The Estate Agent have not tested any apparatus, equipment, fixtures, fittings or services and it is the buyer's interests to check the working condition of any appliances. Simon Burt The Estate Agent has not sought to verify the legal title of the property and the buyers must obtain verification from their solicitor.

Energy Efficiency Rating

