



14 Whitebeam Close, Coventry CV4 9UL

www.simonburthomes.co.uk

£230,000

Key Features

Canopy Porch
Reception Hall
Living Room
Re-Fitted Breakfast Kitchen
Study
Conservatory
Three Bedrooms
Re-Fitted En-Suite Shower Room
Re-Fitted Bathroom
Gas Central Heating
Double Glazing
Driveway Offering Off Road Parking
Garage Store
Rear Garden
No Chain

14 Whitebeam Close is a tastefully presented, well proportioned, modern, three bedroomed, semi detached residence, enjoying a quiet cul-de-sac location in this highly sought after residential location.

Vendor's Comments

The house is positioned in a quiet cul-de-sac position overlooking the fields and a small brook that runs through.

I have lived in the house for 10 years with my children, we have always felt comfortable there with good neighbours and it's a superb spot for commuting, local amenities and schools.

Tenure

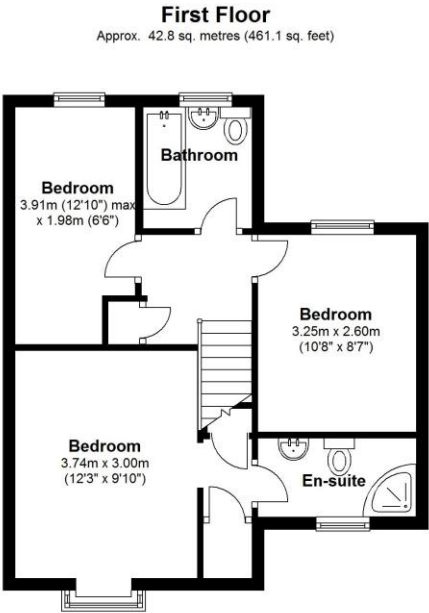
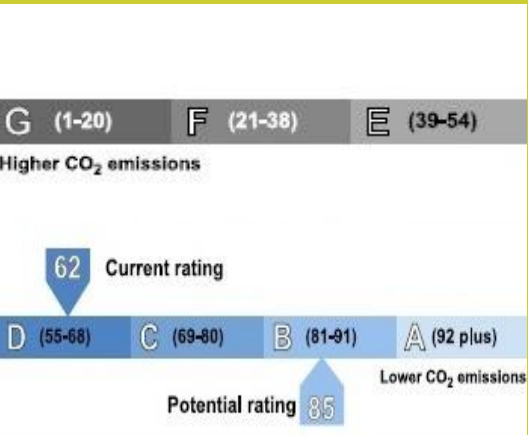
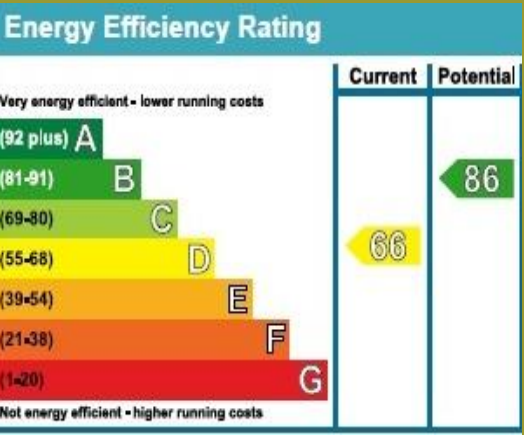
We have been advised that the property is FREEHOLD. However, you should check this with your legal advisor before exchanging contracts.

Local Authority

Coventry City Council

Viewing Arrangements

Telephone: 01676 534040 Email: sales@simonburthomes.co.uk Visit: www.simonburthomes.co.uk



Total area: approx. 101.9 sq. metres (1096.6 sq. feet)

These particulars do not constitute part or all of an offer or contract. The measurements indicated are supplied for guidance only and as such must be considered incorrect. Potential buyers are advised to recheck the measurements before committing to any expense. Simon Burt The Estate Agent have not tested any apparatus, equipment, fixtures, fittings or services and it is the buyer's interests to check the working condition of any appliances. Simon Burt The Estate Agent has not sought to verify the legal title of the property and the buyers must obtain verification from their solicitor.



