



17 Witherford Croft, Solihull B91 1TU

£315,000

www.simonburthomes.co.uk

Key Features

Entrance Porch
 Reception Hall
 Dining Room
 Lounge
 Re-Fitted Kitchen
 Utility Area
 Guest Cloakroom
 Three Bedrooms
 Re-Fitted Bathroom
 Gas Central Heating
 Double Glazing
 Driveway Parking
 Garage
 Established Rear Garden

17 Witherford Croft is a tastefully presented, much improved, traditional, three bedroomed, semi detached family home, conveniently situated in this highly desirable residential area.

Vendor's Comments

When we bought our house it needed a lot of updating, we had an aubergine bathroom and a 34 year old kitchen!

We've really enjoyed modernising our home and giving it a new lease of life. It's a nice place to live with a lovely community feel and in a brilliant spot with Solihull, local parks, schools etc., being easily accessible.

Tenure

We have been advised that the property is FREEHOLD. However, you should check this with your legal advisor before exchanging contracts.

Local Authority

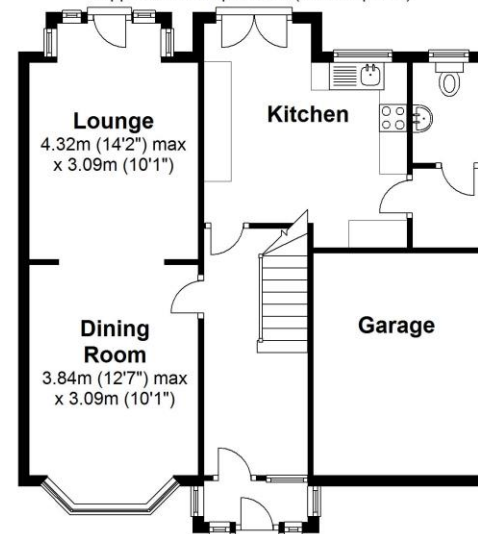
Solihull Metropolitan Borough Council

Viewing Arrangements

Telephone: 0121 705 4040 Email: sales@simonburthomes.co.uk Visit: www.simonburthomes.co.uk

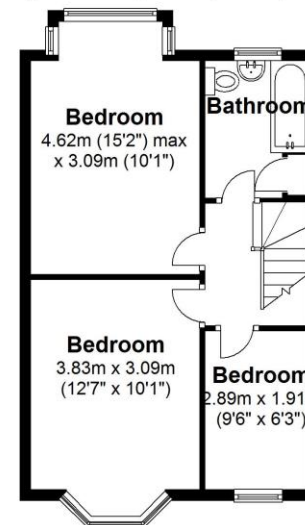
Ground Floor

Approx. 67.0 sq. metres (720.9 sq. feet)



First Floor

Approx. 41.4 sq. metres (446.1 sq. feet)



Total area: approx. 108.4 sq. metres (1167.0 sq. feet)

These particulars do not constitute part or all of an offer or contract. The measurements indicated are supplied for guidance only and as such must be considered incorrect. Potential buyers are advised to recheck the measurements before committing to any expense. Simon Burt The Estate Agent have not tested any apparatus, equipment, fixtures, fittings or services and it is the buyer's interests to check the working condition of any appliances. Simon Burt The Estate Agent has not sought to verify the legal title of the property and the buyers must obtain verification from their solicitor.

