



2 Radlow Crescent, Marston Green, Birmingham B37 7LZ £375,000

www.simonburthomes.co.uk

Key Features

Reception Hall / Guest Cloakroom
Lounge / Dining Room
Reception Room Three / Study
Breakfast Kitchen
Four Bedrooms
En-Suite Shower Room
Family Shower Room
Gas Central Heating / Double Glazing
Driveway Parking for Several Vehicles
Rear Garden

2 Radlow Crescent is an impressive, spacious, much improved, four bedroomed, executive, detached family home, situated in this highly regarded residential area.

Local Authority

Solihull Metropolitan Borough Council

Vendor's Comments

We have enjoyed every moment we have spent here over the last 16 years, we watched the house get built brick by brick so it will be an sad day when we have to leave so many great memories behind.

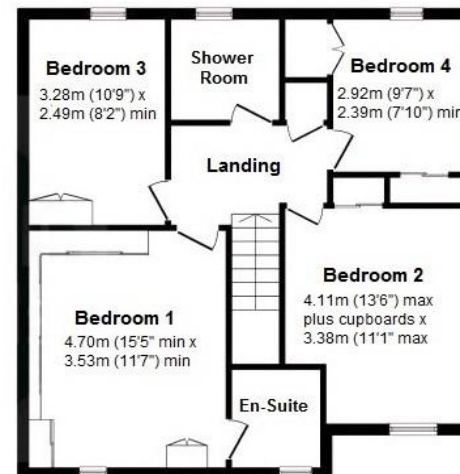
We are sure that the new owners will enjoy the house and as much as we have and make it their own special home as we have.

Tenure

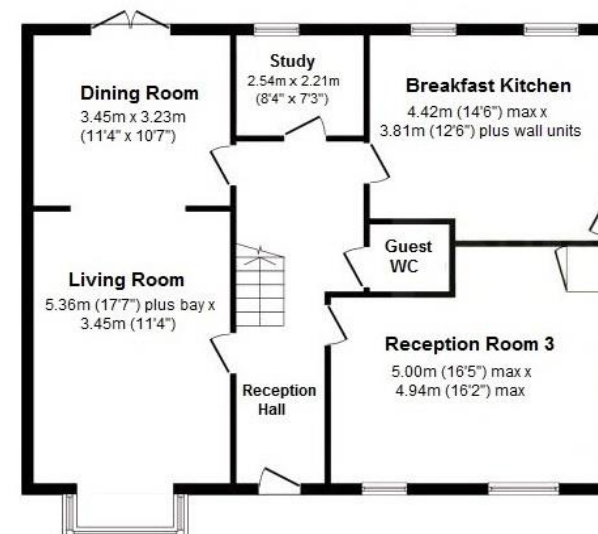
We have been advised that the property is FREEHOLD. However, you should check this with your legal advisor before exchanging contracts.

Viewing Arrangements

Telephone: 0121 705 4040 Email: sales@simonburthomes.co.uk Visit: www.simonburthomes.co.uk



First Floor



Ground Floor

These particulars do not constitute part or all of an offer or contract. The measurements indicated are supplied for guidance only and as such must be considered incorrect. Potential buyers are advised to recheck the measurements before committing to any expense. Simon Burt The Estate Agent have not tested any apparatus, equipment, fixtures, fittings or services and it is the buyer's interests to check the working condition of any appliances. Simon Burt The Estate Agent has not sought to verify the legal title of the property and the buyers must obtain verification from their solicitor.

Energy Efficiency Rating

