



24 Blaythorn Avenue, Solihull B92 8TS

www.simonburthomes.co.uk

£250,000

Key Features

Reception Hall
 Guest Cloakroom
 Living Room
 Fitted Dining Kitchen
 Three Bedrooms
 Family Bathroom
 Gas Central Heating
 Double Glazing
 Side Garage
 Foregarden with Driveway Parking
 Private Rear Garden

24 Blaythorn Avenue is a well presented, modern style, three bedroom, detached family home, conveniently situated in this quiet cul-de-sac location within this highly regarded residential area.

Tenure

We have been advised that the property is FREEHOLD. However, you should check this with your legal advisor before exchanging contracts.

Vendor's Comments

This is a substantial family home situated on a wide corner plot overlooking a small green. There is the potential to park three cars on the drive and was built to a high specification 30 years ago by Bryant's builders.

We have a lovely private south facing garden that is not overlooked and offers the perfect entertaining space during the summer. This is a quiet friendly cul-de-sac in Solihull with excellent amenities.

Local Schools

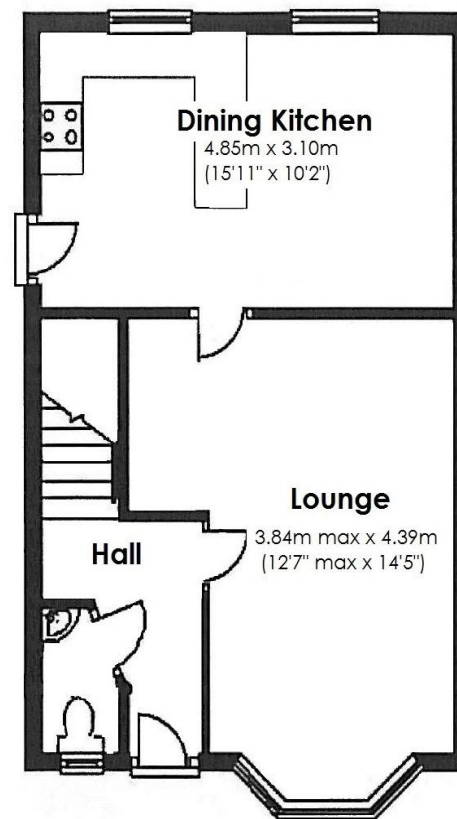
Daylesford Infant School
 Lyndon School
 Chapel Fields Junior School
 St Andrews Catholic Primary School

Local Authority

Solihull Metropolitan Borough Council

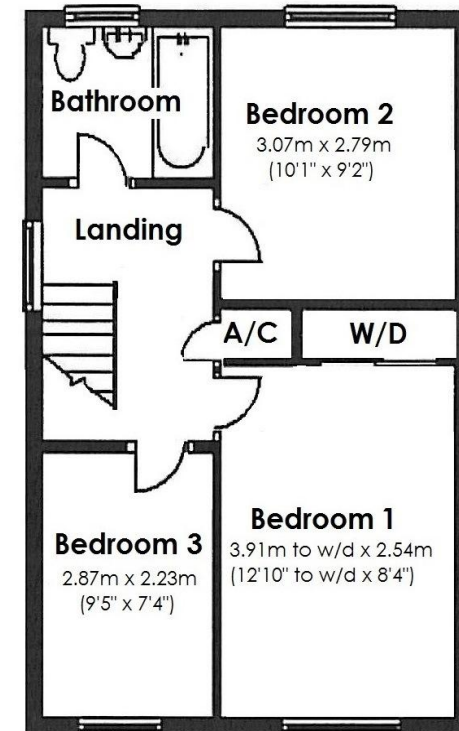
Ground Floor

Approx. 40.2 sq. metres (432.7 sq. feet)



First Floor

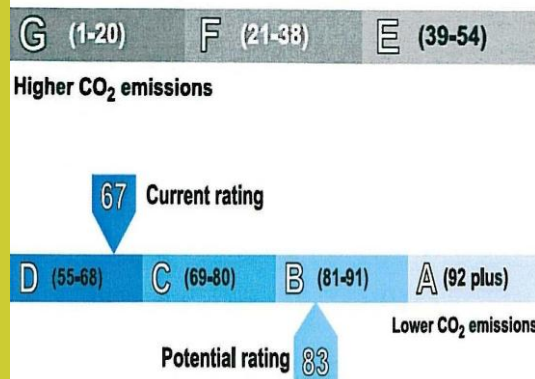
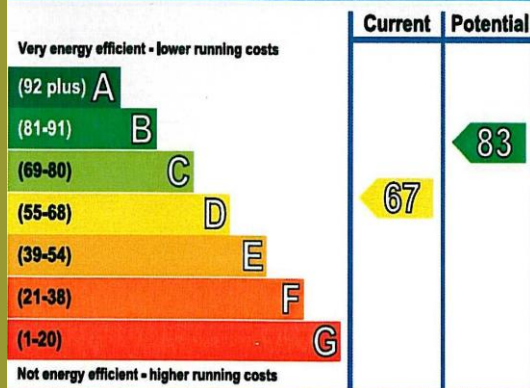
Approx. 37.6 sq. metres (405.2 sq. feet)



Viewing Arrangements

Telephone: 0121 705 4040 Email: sales@simonburthomes.co.uk Visit: www.simonburthomes.co.uk

Energy Efficiency Rating



Total Approx: 77.8 sq. metres (837.9 sq. feet)

These particulars do not constitute part or all of an offer or contract. The measurements indicated are supplied for guidance only and as such must be considered incorrect. Potential buyers are advised to recheck the measurements before committing to any expense. Simon Burt The Estate Agent have not tested any apparatus, equipment, fixtures, fittings or services and it is the buyer's interests to check the working condition of any appliances. Simon Burt The Estate Agent has not sought to verify the legal title of the property and the buyers must obtain verification from their solicitor.



